

CLICKSYS™

Delivering Value through Innovation



Roof Mounted
Solution

Save time and money with the most revolutionary PV mounting system in the world!

Engineered for flush roof mounting applications, CLICKSYS offers superior aesthetics with great value and is easily installed on most roofing types, including barrel and Spanish tiles.

The unique I-beam design of CLICKSYS optimizes strength, eliminates excess material found in other systems, and offers a cost effective solution as low as 10 cents per watt.

With no drilling required and “click and secure” connections eliminating the need for nuts and bolts, CLICKSYS gets installers off the roof in nearly half the time when compared to other competitive products.

As always, Unirac stands behind our solutions with our 10-year warranty.



Visit us online at www.clicksys-beam.com

CLICKSYS BEAM

Delivering Value through Innovation

Beams

Aluminum support beams are one of the most efficient designs for PV racking, reducing material, cost and carbon footprint while achieving the same strength as standard box frame rail designs. CLICKSYS beams come in one length (144"), eliminating the need to stock multiple rail lengths.



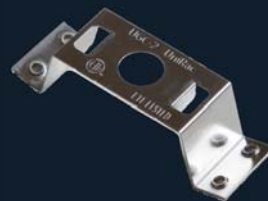
MODULE MOUNTING & GROUNDING

Assembly Sequence Is Your Choice



Sliders and Top Mounting Clamps

Sliders hold hex bolts in place while top mounting clamps securely grip any point of the module frame, freeing you from the constraints of module mounting holes.

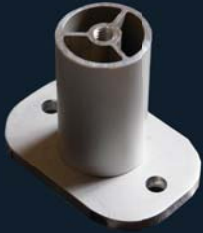


UGC-2 (Grounding)

You can use UGC-2 grounding clips to eliminate the need for grounding modules individually. This greatly reduces the number of costly grounding lugs and bare copper wire needed.

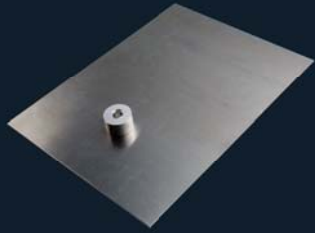
ATTACHMENT OPTIONS

Flexible Components Speed Installation



Standoffs

Unirac's standard standoff design offers more elevation for greater airflow under a finished array. CLICKSYS standoffs are accompanied with all hardware needed including a 1 Flange Connection.



Quick Mount PV Flashing

A custom flashing specifically designed for CLICKSYS, the Quick Mount PV comes complete with 1 Flange Connection and lag hardware. This flashing provides a clear advantage over standard flashing techniques by increasing the height $\frac{3}{4}$ " and providing a faster installation over standard installations.



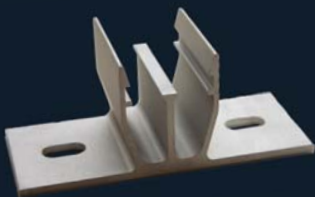
Tile Hook

Made from cast aluminum, the tile hook attachment provides CLICKSYS with a cost-effective solution for barrel or Spanish tile roofs. All required lag bolts and hardware are included except for a 1 Flange Connection. Refer to the tile hook engineering data for max load capabilities.



1 Flange Connection

Use in conjunction with standoffs, Quick Mount PV, or when directly installing on composite shingles using a lag bolt. Both connection options utilize Clickfit technology, allowing attachment to CLICKSYS beams without any tools or additional fasteners.



2 Flange Connection

Efficiently secure beams to the roof using 3" Concealor screws. Concealor screws can be driven into the structure with a cordless drill. No pilot holes required. 2 Flange Connections come with or without the integrated butyl backing allowing you to use your preferred sealing method.

KEY BENEFITS

of CLICKSYS Rail

Incomparable Value

- As low as 10 cents per watt
- Freedom and flexibility to accommodate majority of PV modules
- Integral grounding options

Faster, Flexible Attachments

- Installs in half the time of competitive products
- "Click and Secure" solutions
- Spanish/barrel tile solution

In Stock, Ready to Ship

- Nationwide distribution network
- Fast Fulfillment

Complete technical support

- Installation and code compliance documentation/quick engineering guide
- Online specification tool and training videos
- Installation instructions accessible from mobile devices

Bright Thinking in Solar



Component Specifications

Beam: 6005-T5 aluminum

Slider: 6005-T5 aluminum, anodized

Mounting Clamps: 6105-T5 aluminum, anodized

Connection: 6005-T5 aluminum

1/4-20 bolts: 300 series stainless steel meeting ASTM F593

1/4-20 nuts: 300 series stainless steel meeting ASTM F594

Butyl: Polyisobutylene and a cross-linked butyl

Lag Bolts: Electroplated zinc on AISI 1006-1022 or equivalent steel

Concealor Screws: Steel coated with an epoxy finish that exceeds FM4470

Code Compliant

CLICKSYS is PE certified.

Visit www.clicksys-beam.com for documentation applicable to your building code.

Warranty

CLICKSYS is covered by a 10-year limited product warranty.

For complete warranties, download the CLICKSYS installation manual from our web site.